



First Friday Breakfast Club

February 2, 2024

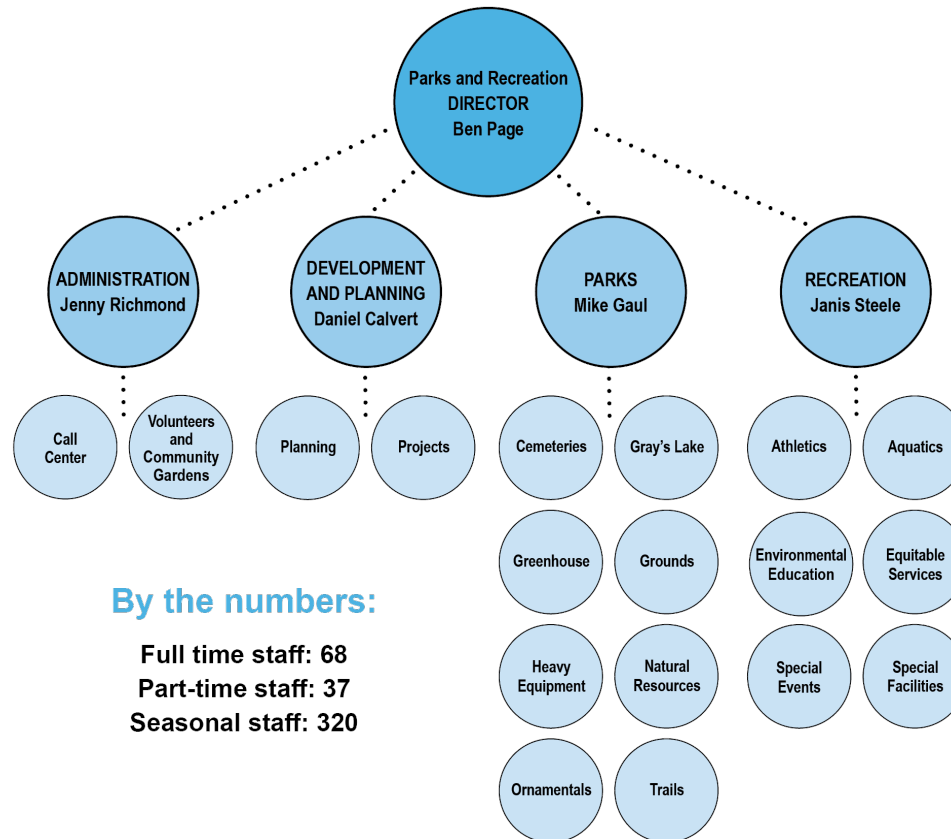
Our Mission



“Helping Des Moines Live Well,
Play Hard and
Protect the Earth.”



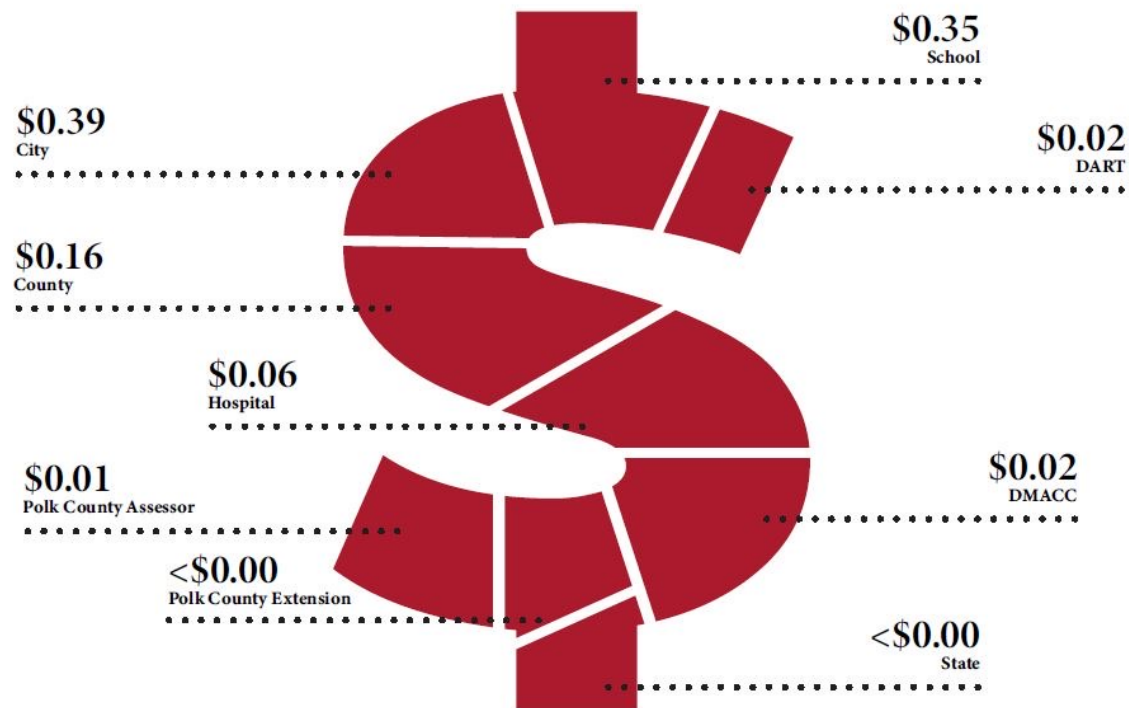
Department Structure



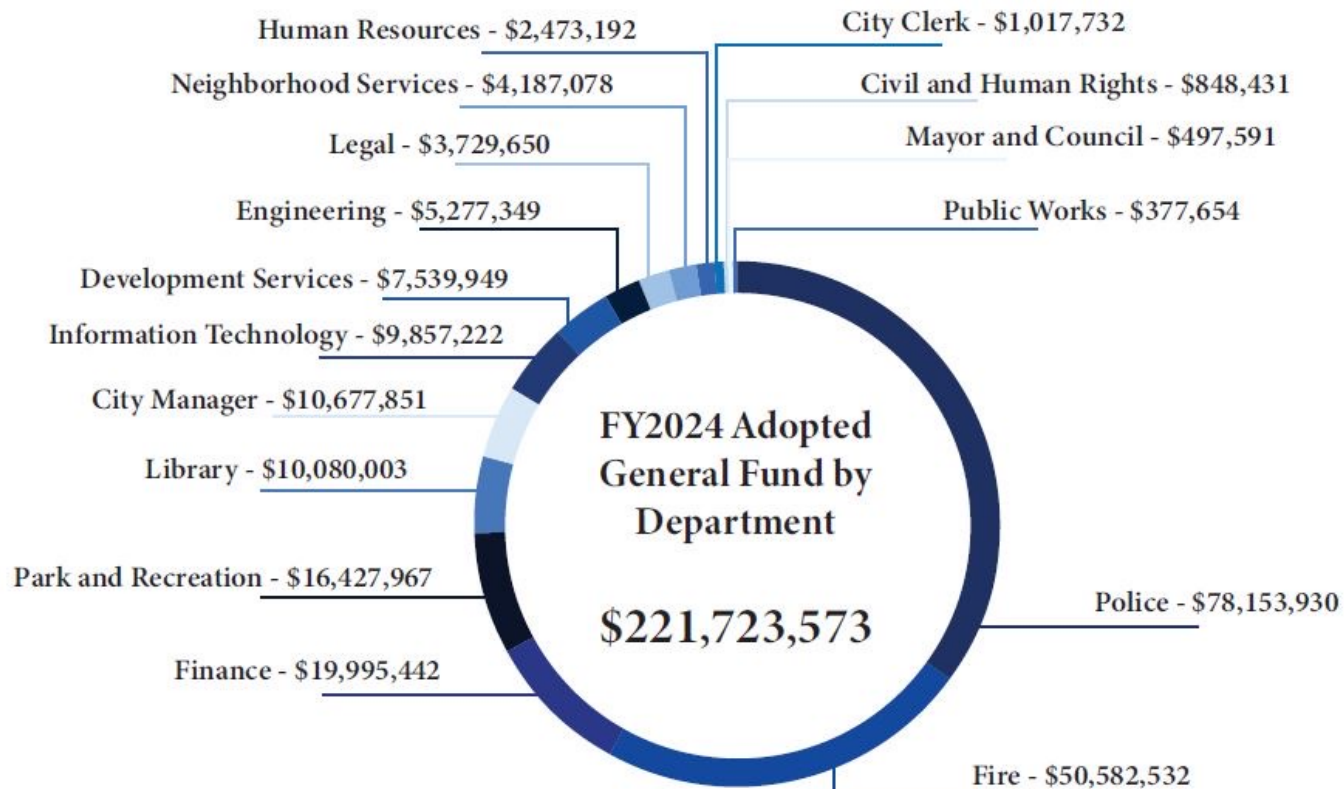
City of Des Moines Financials



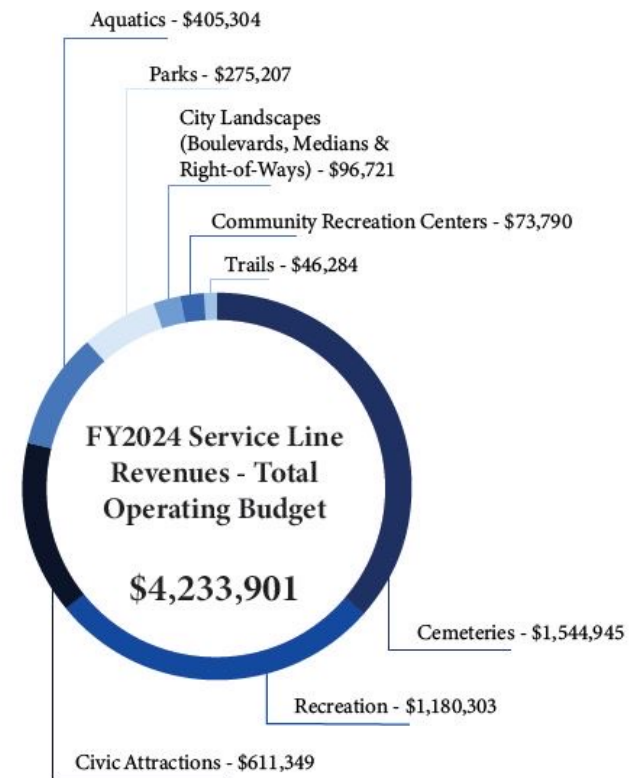
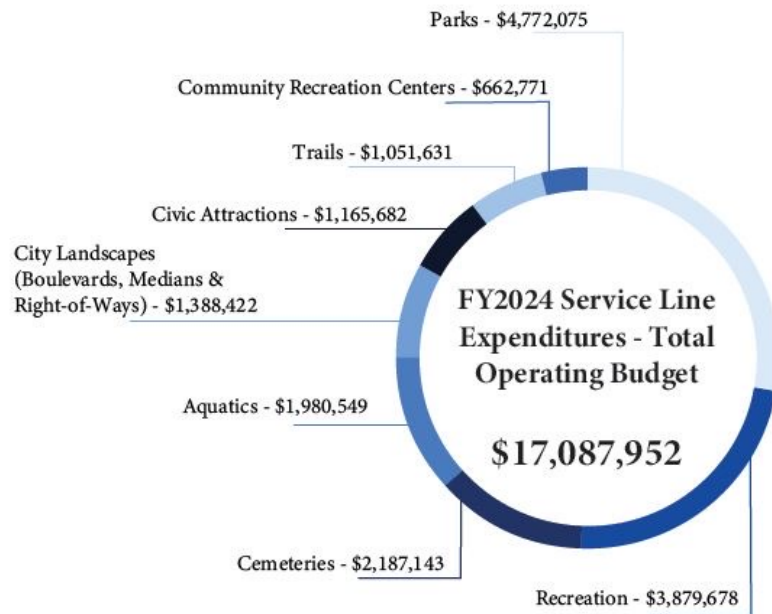
Where does your property tax dollar go?



General Fund by Department



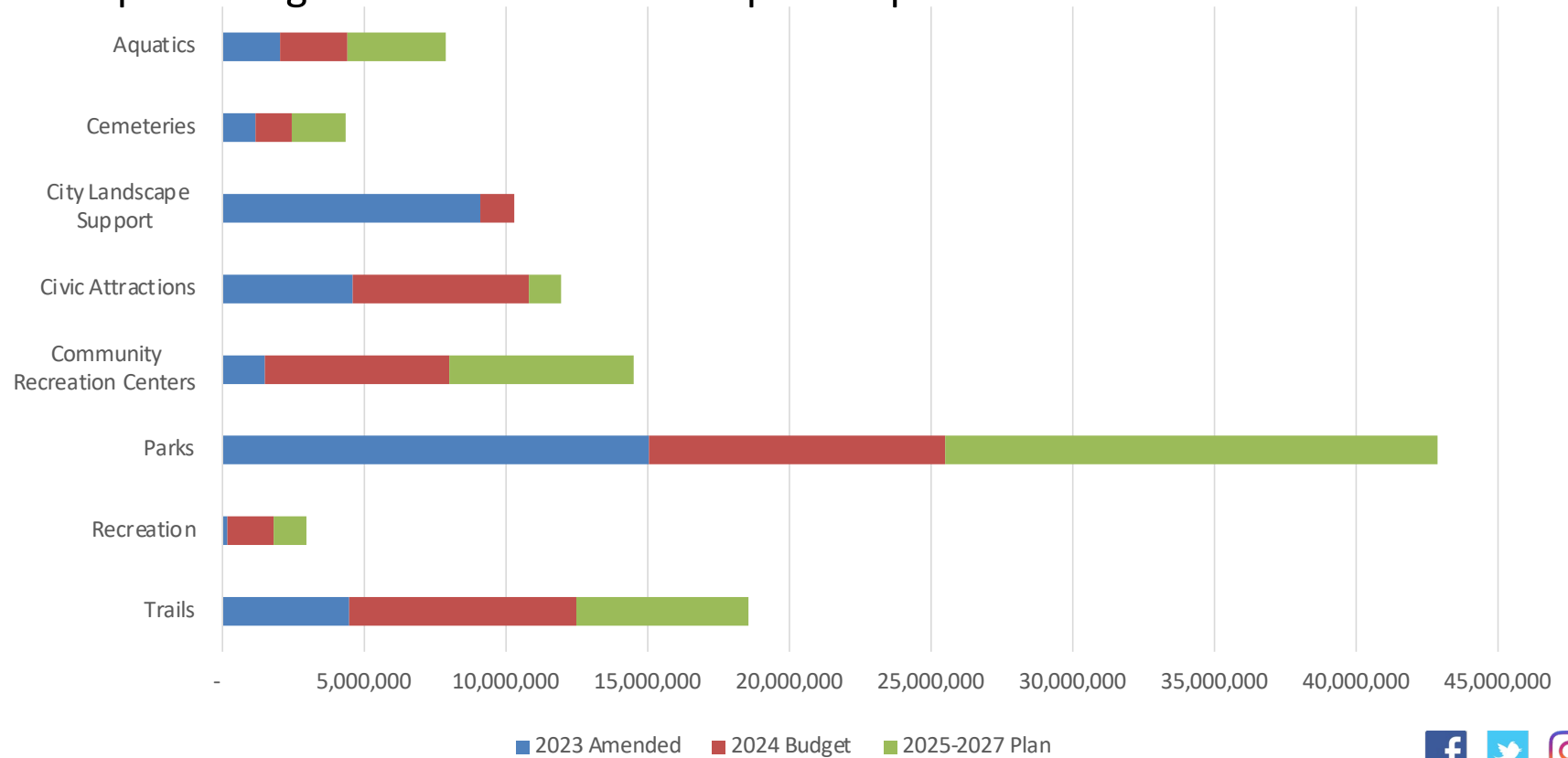
Operating Budget



Capital Budget



FY2024 Capital Budget and FY2025-2027 Capital Improvement Plan

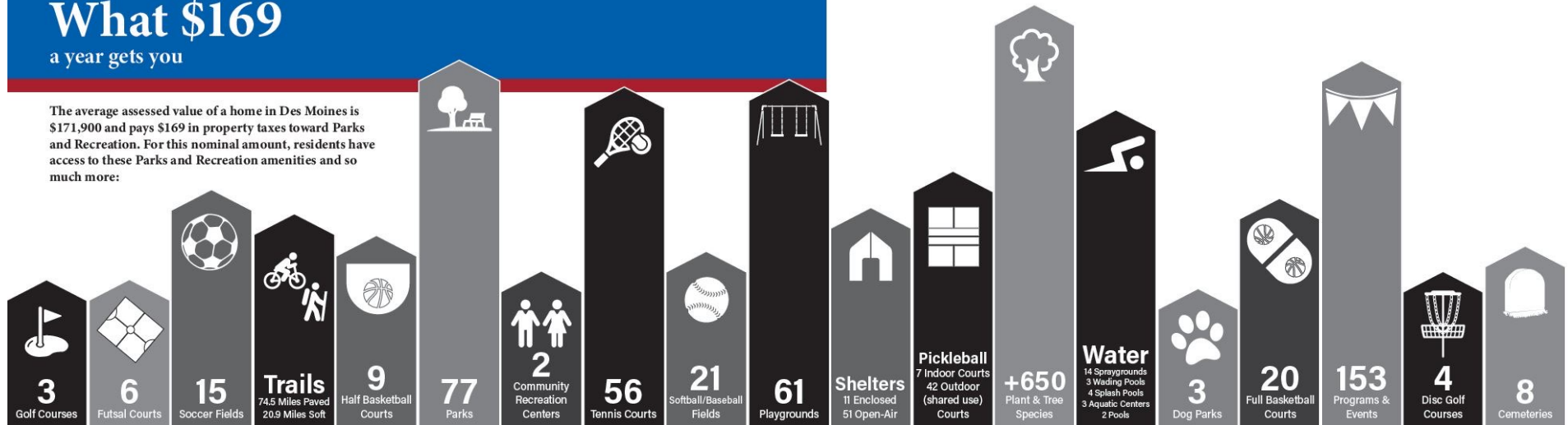


Value

What \$169

a year gets you

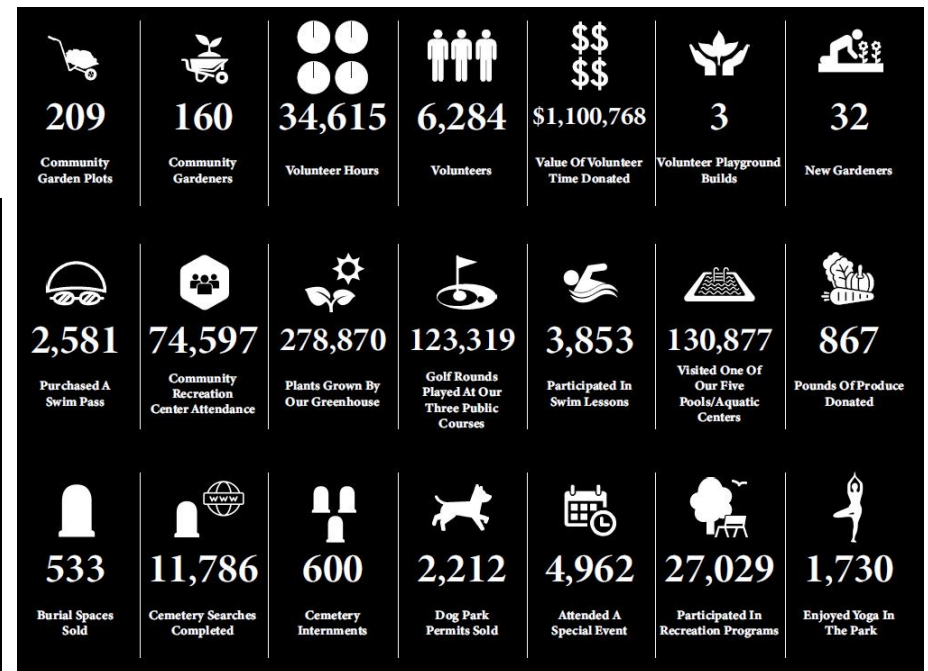
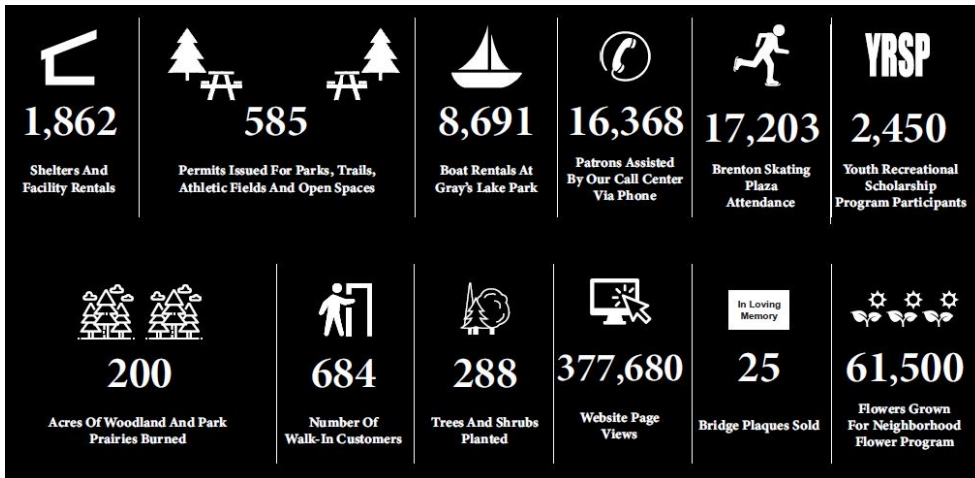
The average assessed value of a home in Des Moines is \$171,900 and pays \$169 in property taxes toward Parks and Recreation. For this nominal amount, residents have access to these Parks and Recreation amenities and so much more:



Services



By the numbers:



Public Places



Water Facilities

- Five pools and aquatic centers
 - 130,877 patrons
- Three traditional wading pools
 - 2,972 patrons
- Four splash pools
 - 36,537 patrons
- 14 Spraygrounds
- Two fountains



Brenton Skating Plaza

- Welcomed over 17,000 patrons in 2022-23
- Open mid-November thru early March
- Private rentals available
- Special events:
 - Senior skate
 - Adaptive skate
 - MLK Jr. donate and skate day
 - Superhero and Princess skate day



Cemeteries

- Eight Municipal Cemeteries
 - Elm Grove
 - Glendale
 - Glendale Masonic
 - Laurel Hill
 - Oak Grove
 - Sims
 - St. Ambrose
 - Woodland
- Online database to search over 170,000 interments
- Numerous volunteering options



Woodland Cemetery History Quest

- One of only 14 cemeteries in the US to use QR codes for a self-guided history tour.
- 70 short videos narrated by descendants of people buried in Woodland.
- Videos can be seen from the Parks and Recreation YouTube channel.
- By the end of 2023, the History Quest had over 30,000 views.
- The project has been promoted on KCCI, CBS Radio, in the New York Post, and over 25 media outlets nationally.



Community Recreation Centers



- Fourmile
 - 2023 yearly attendance – 27,627
- Pioneer Columbus
 - 2023 yearly attendance – 47,991
- Newly remodeled
- Year-round programming options
- Fees:
 - Under 17 – free
 - 18 - 59 – \$1 / day
 - 60 + – free



Dog Parks

- Three facilities
 - Ewing
 - Reno Memorial
 - Riverwalk
- Annual permit cost is \$20



Greenhouse

- 15,000 square foot facility
- Nearly 320,000 annuals grown in-house yearly
- Number of perennials and natives increasing
- Volunteers
- New greenhouse opening in 2024



Sports Complexes

- George Davis Softball Park
- James W. Cownie Baseball Park
- James W. Cownie Soccer Park
- Hosting over 500 events in 2023



Iowa Girls and Boys State Soccer Tournament



Parks



77 parks and five signature facilities: Ewing, Union, Greenwood, Gray's Lake and John and Mary Pappajohn Sculpture Park

- Basketball courts
- Boulder climbing
- Concessions
- Boat and bicycle rentals
- Disc golf courses
- Enclosed and open-air shelters
- Fishing ponds
- Futsal courts
- Natural playscape
- Nature trails
- Picnic areas with tables and grills
- Playgrounds
- Skate park
- Sledding hills
- Softball fields
- Soccer fields
- Tennis courts
- Volleyball courts



Trails

- Most popular and most used amenities in park system
- 63 miles of paved multi-use connect to over 500 miles of regional trails
- 18 soft surface nature trails in three parks
- Over 3.2M estimated trail trips in 2023
- An estimated 8,868 daily user average



Shelters

- 12 enclosed facilities rented 1151 times in 2023
- 51 open-air facilities rented 770 times in 2023
- Some are available for reservation others are “first come, first serve” shelters



Golf Courses

- Three public courses
 - Waveland
 - Bright Grandview
 - A.H. Blank
- Nearly 125,000 rounds played in 2023
- Generating over \$5.5M in 2023
- Rent clubhouses for private events



Civic Attractions



Programs



Athletics

- Indoor and outdoor
- Offerings for all ages
- Pee Wee
- Youth
- Adult
- Teams and individual



Scholarship Programs



Youth Recreational Scholarship Program (YRSP)

- 2023 participants: **1,632**
- The Youth Recreational Scholarship Program is for Des Moines Public School students who qualify for free/reduced fees based on their household income
- \$5 - Youth Sports Registration and Swim Lessons

Greater Des Moines Recreational Activity Scholarship Program (GRASP)

- 2023 participants: **818**
- This program allows low-income families discounts on programs and rentals
- \$5 - Youth Sports Registrations and Swim Lessons
- Receive 50% off open-air shelters and boat/bike rentals at Gray's Lake
- Receive 75% off season swim passes and community garden plots



Environmental Education

- Bald Eagle Day
- Birding
- Canoeing
- Geocaching
- Snowshoeing
- Stand-up paddleboard instruction
- Star Party
- Hosting over 60 programs in 2023



Special Events and Other Programs

- Earth Day Trash Bash
- Snowball Dance
- Free Flicks neighborhood movie program
- Mayor's Annual Ride
- Superhero Princess Swim
- Toys for Tots
- Yoga



Friends of Des Moines Parks



Mission Statement:

First established by a group of citizens as The Des Moines Park and Recreation Foundation in 1993, the Friends of Des Moines Parks is a nonprofit 501c3 organization with a mission to preserve, protect, improve, and promote the use of Des Moines' parks, greenways, and recreational programs for the benefit of all neighborhoods, residents, and visitors.



www.friendsofdmparks.org

Projects:

Check out projects and programs that are making a big impact on parks, public spaces and people in Des Moines.

Events:

Attend one of the impactful community events we host in partnership with Des Moines Parks and Recreation

Memorials:

Give someone the ultimate gift – memorial benches and trees

Donate:

Explore the different ways you can offer support and continue making Des Moines a top place to work, live and play!



Trust for Public Land – Park Score



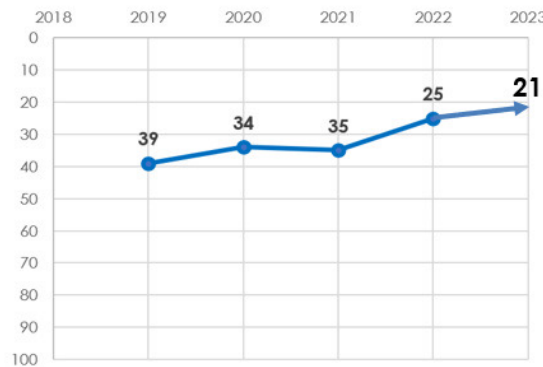
Performance History

2021 rank	ParkScore	
35	58.1	
2022 Rank	Points	
25	60.8	
2023 Rank	Points	
(21) NA	62.1	

2023 Performance Peers

- 17. 67.7
- 18. 64.0
- 19. 63.9
- 20. 62.5
- 21. 61.8 ← 21. Des Moines 62.1
- 22. 61.4
- 23. 61.1
- 24. 60.9

City of Des Moines | ParkScore Ranking



NRPA – National Gold Medal Award



The National Gold Medal Award honors public park and recreation agencies and state park systems throughout the United States and armed forces recreation programs worldwide that demonstrate excellence in:

- Long-range planning
- Resource management
- Innovative approaches to delivering superb park and recreation services
- Fiscally sound business practices

Des Moines Parks and Recreation is in Class II (population of 150,001 to 400,000).

In the short history of applying for this highly competitive award, we have received impressive results:

- 2022 = WINNER!
- 2021 = Finalist
- 2020 = Finalist
- 2015 = Finalist

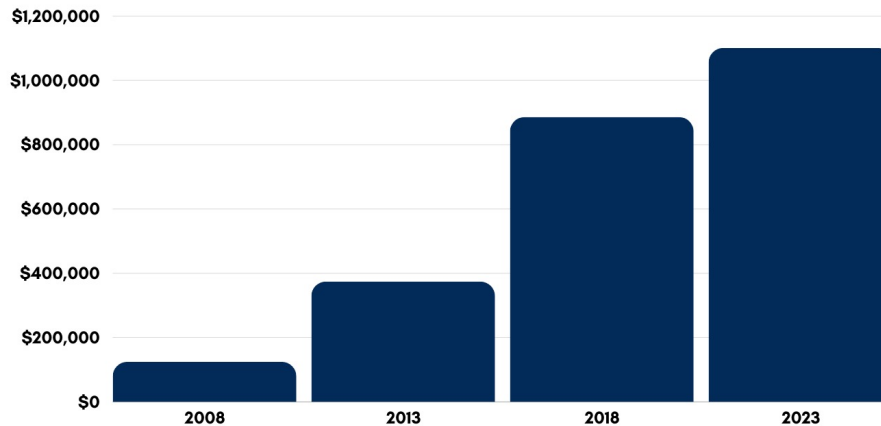


Ironman North American Championship



Volunteer Engagement

Value of Volunteerism



**based on Independent Sector Value of a Volunteer*



Total number of volunteers in 2023: **6,284**
Total number of volunteer hours in 2023: **34,615**
Total value: **More than \$1,100,100**



Volunteer Opportunities

How Volunteers Can Help:

- Trails
- Cemeteries
- Dog Parks
- Grounds
- Natural Resources
- Environmental Education
- Greenhouse
- Administrative
- Special Events
- Athletics
- Community Gardens

Email: parksvolunteer@dmgov.org

Phone: 515-248-6380



Adopt-a-Park & Adopt-a-Trail



The Adopt-a-Park and Adopt-a-Trail program is a partnership between Des Moines Parks and Recreation, community members, public or private organizations and local businesses to assist in the cleanup and beautification of parks and trails.

- 29 locations (10 trails and 19 parks)
- TOTAL in 2022: 631 volunteers donated 1,177.25 hours valued at \$35,258.69

2023

ADOPT-A-PARK ADOPT-A-TRAIL

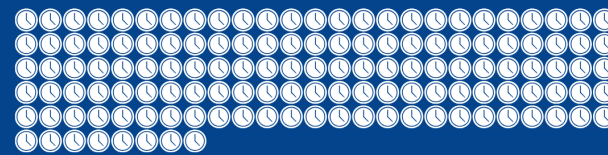
37

LOCATIONS ADOPTED



1,334

OF HOURS DONATED



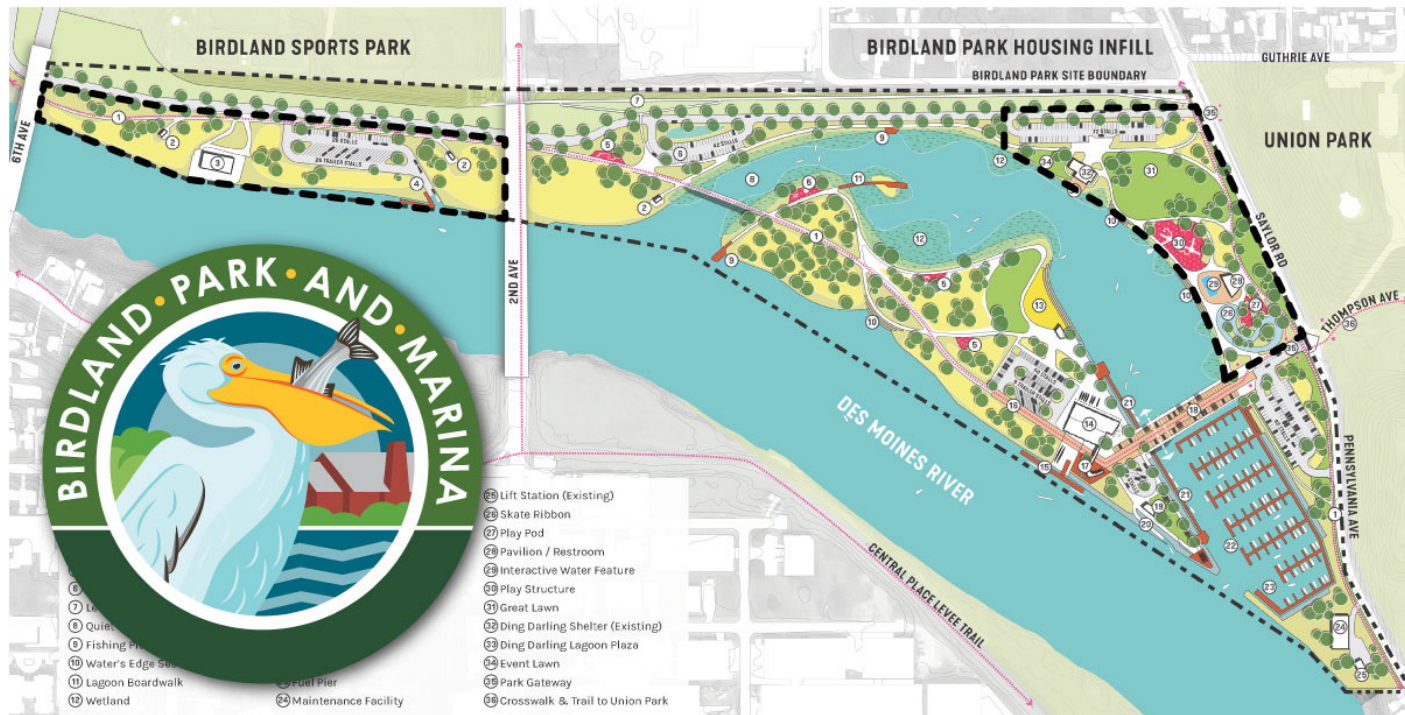
735

OF VOLUNTEERS

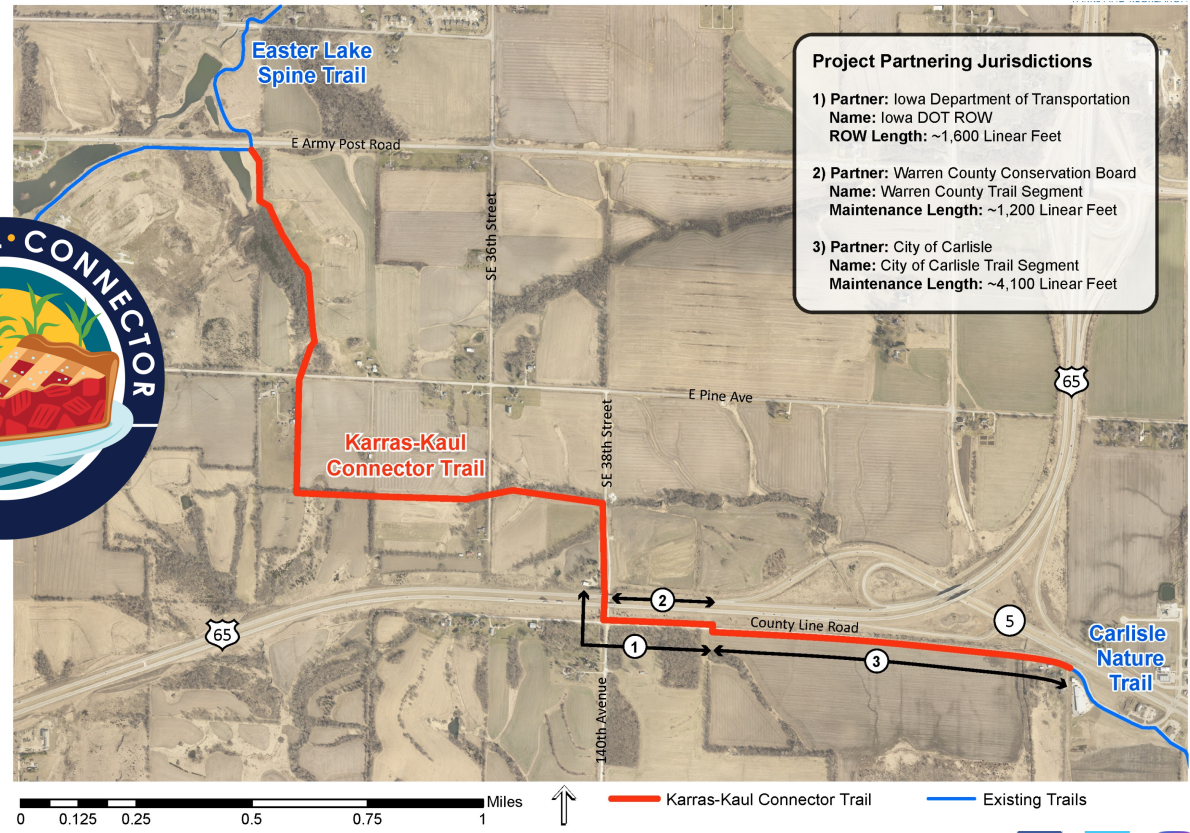


Projects

Birdland Park Master Plan | Phase 1



Karras-Kaul Trail Connector



- Project Partnering Jurisdictions**
- 1) Partner: Iowa Department of Transportation
Name: Iowa DOT ROW
ROW Length: ~1,600 Linear Feet
 - 2) Partner: Warren County Conservation Board
Name: Warren County Trail Segment
Maintenance Length: ~1,200 Linear Feet
 - 3) Partner: City of Carlisle
Name: City of Carlisle Trail Segment
Maintenance Length: ~4,100 Linear Feet



Brook Run Playground Improvements



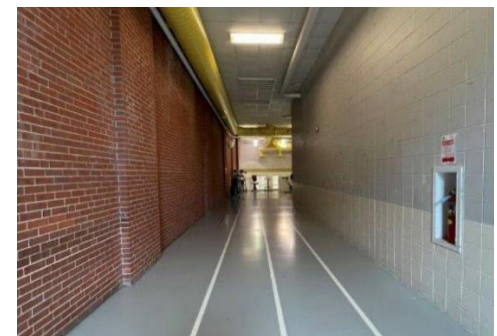
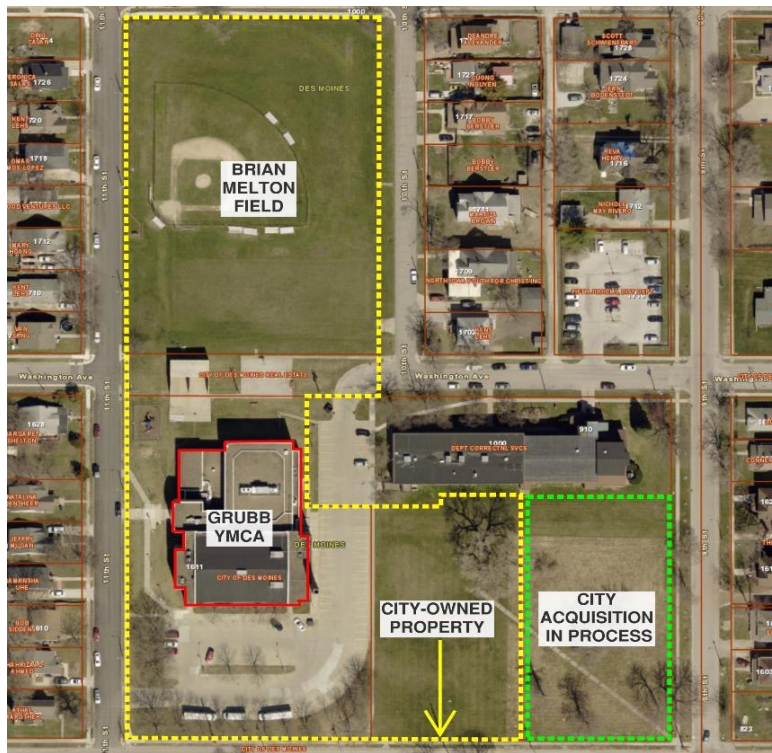
Cohen Park Improvements



Reichardt Community Recreation Center



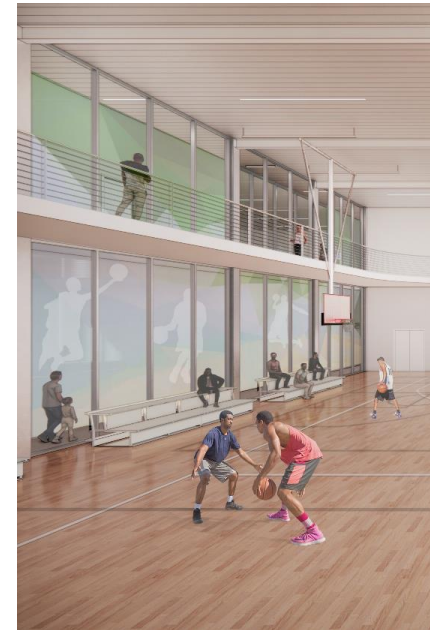
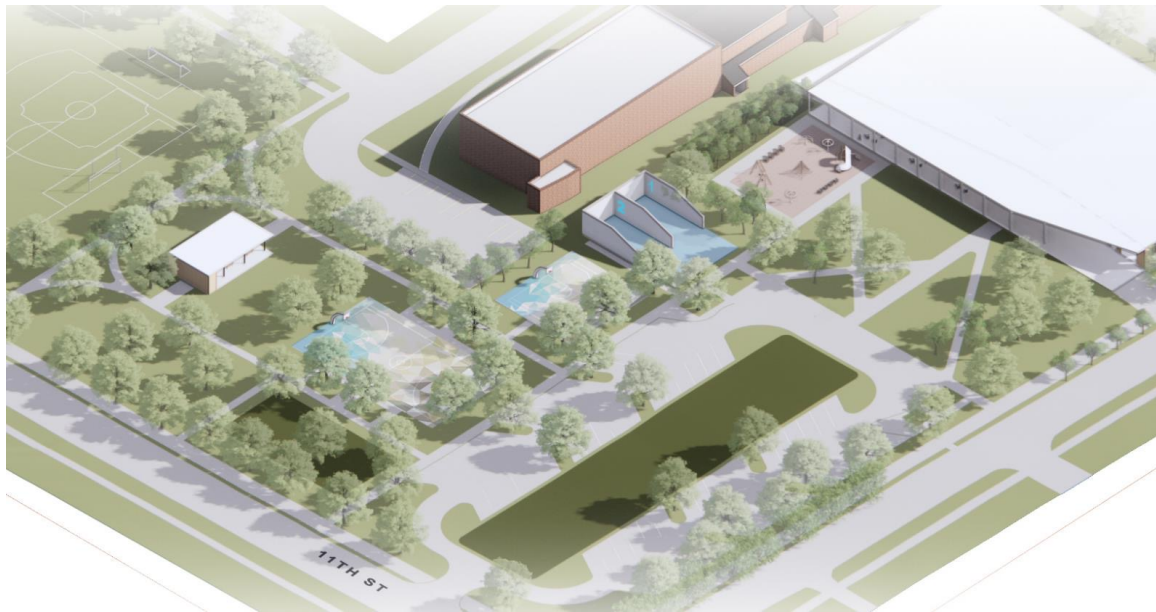
Formerly know as: Grubb YMCA and Northside Community Recreation Center
Current space:



Reichardt Community Recreation Center



Conceptual plans:



Evelyn K. Davis Park Improvements



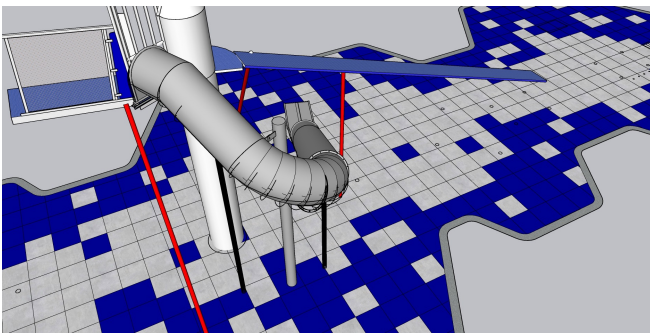
McHenry Park Playground Improvements



Riverview Park Improvements



Union Park Rocket Slide



Follow us on Social Media



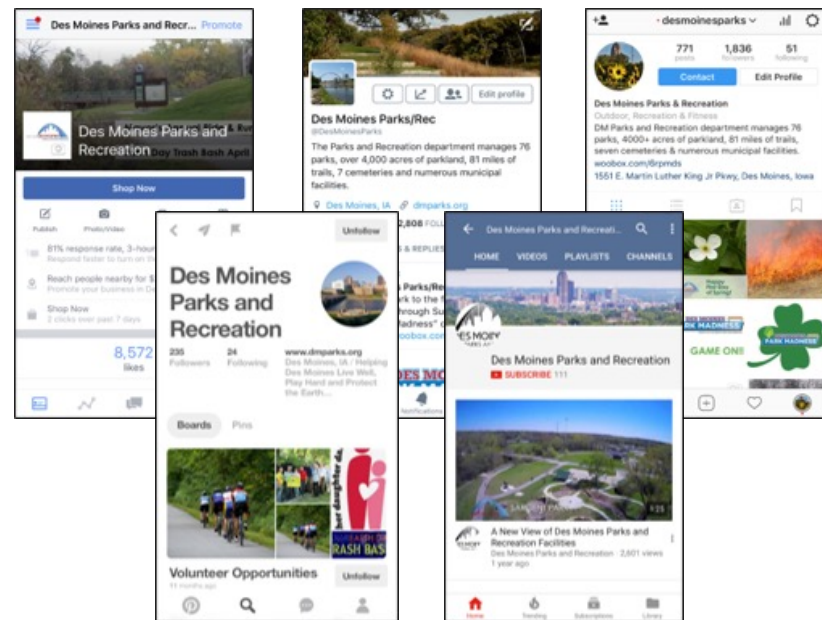
 /desmoinesparks

 /desmoinesparks

 /desmoinesparks

 /DSMParksDepartment

Over 36,500 followers





Thank you!
