

A large, multi-story brick building, likely a government or institutional structure, is the central focus of the image. The building has many windows, some of which are illuminated from within. A vibrant rainbow arches across the sky above the building. The sky is a mix of dark blue and purple, suggesting dusk or dawn. In the foreground, there is a paved area and some landscaping, including a small tree and a blue structure.

Our Plan for Des Moines' Future

Mayor Connie Boesen – September 2024

Mayoral Priorities



Historic swearing in of Des Moines first female Mayor on January 8, 2024.

- Economic Development
- Youth Support
- Addressing the Mental Health Crisis

An aerial photograph of a city, likely a university campus, with a large white text overlay. The text reads "Economic Development" in a bold, sans-serif font. The background shows a dense cluster of buildings, green spaces, and a road network. The text is centered and occupies a significant portion of the image.

Economic Development



Aston Apartments



Falcon Apartments



Two Ruan Center



Tempo Apartments



Union at River's Edge

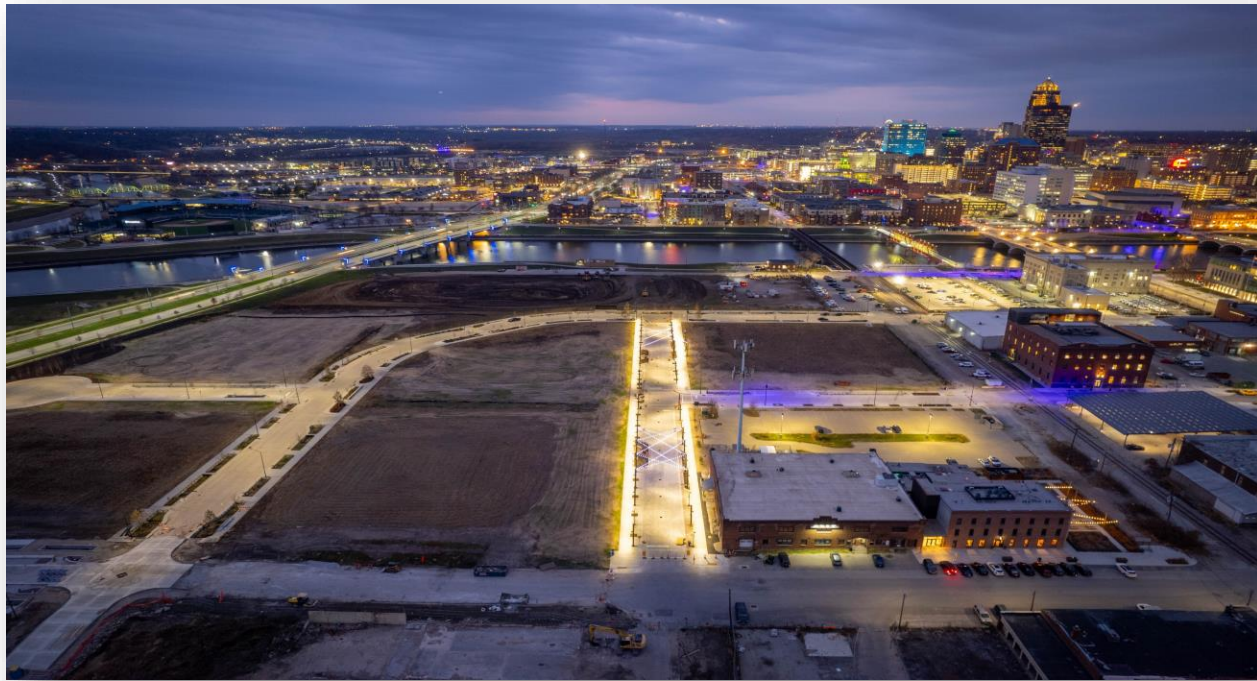


High Street Lofts II

Downtown Housing

- New apartment living options are soon to hit the market
- The Downtown Neighborhood used to be home to few, now the population has boomed
- Demand for downtown housing is still high

Market District Redevelopment



A view of the current redevelopment progress



A rendering of the completed Market District redevelopment

New Dining/Entertainment

Toppling Goliath Brewery



Either/Or



Dinks Pickleball



Nadia's French Bakery



6th Avenue Innovation

6th Avenue Flats



6th Avenue Corridor – Carriage House



Upgraded Bus Shelters
Designed by Sheena Rose



Center at Sixth



6th Avenue Streetscape

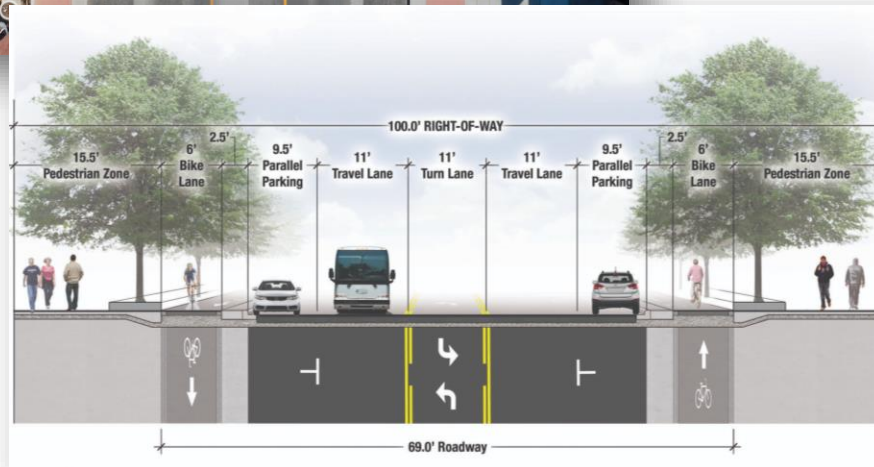
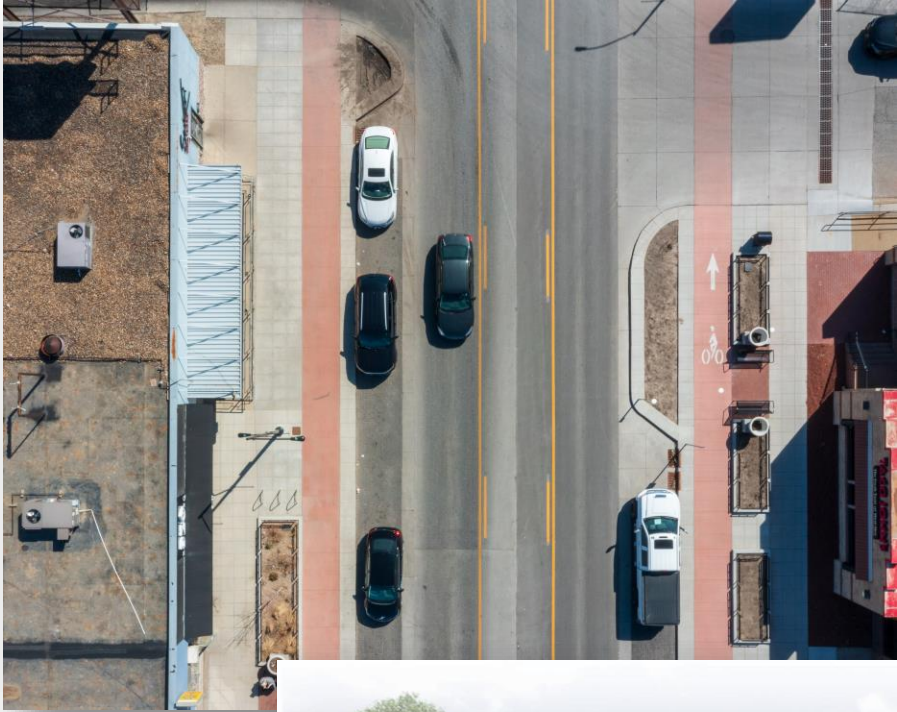
Before Reconstruction (2018)



After Reconstruction (2022)

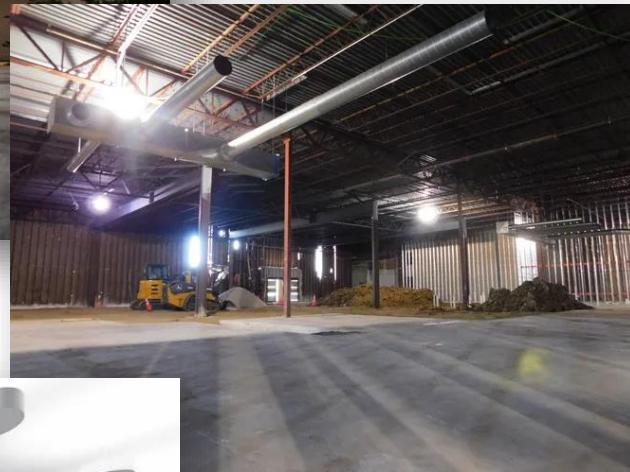


Ingersoll Streetscape



Southridge/SE 14th Activity

Genesis Health Club - Southridge Mall



AHEPA Senior Housing - Southridge



5901 SE 14th Street



6155 SE 14th Street

InvestDSM



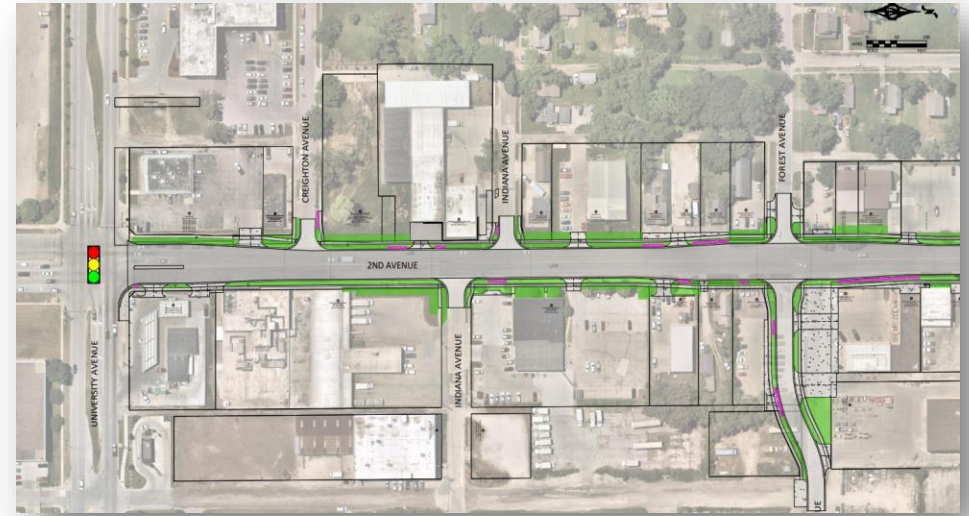
Airport Terminal



SE Connector Project/Grant Award



2nd Avenue Reconstruction



A photograph of a classroom. In the foreground, several students are seated at desks, viewed from behind. A girl in a pink long-sleeved shirt has her right hand raised high. To her left, a girl in a green shirt is writing. To her right, a boy in a camouflage t-shirt is looking towards the front. In the background, a teacher stands near a whiteboard, and a mannequin is visible. The text "Youth Support" is overlaid in the center in a large, white, sans-serif font.

Youth Support

Expanded Preschool Programs with DMPS



- Direct investment of \$3.3 million of ARPA funds to Des Moines Public Schools to open additional Pre-K classrooms through out the district
- Additional \$292,000 investment this year because the pilot year was so successful
- Children enrolled in this program started last school year with minimal skill development – at the end of the year they were achieving above 90% proficiency in every evaluation category

Parks and Recreation Projects

Birdland Park Master Plan - Phase I

Birdland Park/Sports Complex Improvements



Parks and Recreation Projects

Gary's Lake Park – Marina Improvements



Parks and Recreation Projects

Reichardt (North Side) Community Recreation Center



A woman in a white lab coat is sitting in a chair, gesturing with her hands as she speaks to two other people. She is holding a green highlighter and a notebook. The man on the left is wearing a grey hoodie and has his hands clasped. The woman on the right is wearing a denim jacket and has her hands clasped. The background is a modern office setting with a white wall and a light switch.

Addressing the Mental Health Crisis

Mobile Integrated Health Care Program

- In 2022, 82 High Volume Users accounted for 1,450 calls for transport to the hospital
- This places a strain on emergency services
- Since April, the Mobile Integrated Healthcare Team (Staffed by EMS) has assisted individuals with acute and chronic health issues to receive the care they need to keep them from the ER if possible



CARE Program

Crisis Advocacy Response Effort (CARE) program is expanding to better serve the emergency mental health needs in our community. The expansion of the CARE program, between the Des Moines Police Department and the Broadlawns Medical Center, will have clinical professionals trained in helping adolescents and embedded within the emergency dispatch center. These efforts also aim for 24/7 response to mental health calls, expanding from their previous response hours of 6 a.m. to midnight.

The clinically trained professional can assist dispatch staff in screening mental health calls and deciding the level of response that is needed. If the situation doesn't require a response from officers, a team of mental health professionals will be sent out on the call to respond to the people that need assistance.



New Life Services Center



- By partnering with Polk County, we are opening a new Life Services Center in the Drake Neighborhood
- This location will offer a sobering wing, psychiatric urgent care, and crisis monitoring
- We've received a \$750,000 investment from the federal government for this project



**Thank you for
your time!**

400 Robert D. Ray Drive, Des Moines, IA 50309

Connieboesen@dmgov.org

